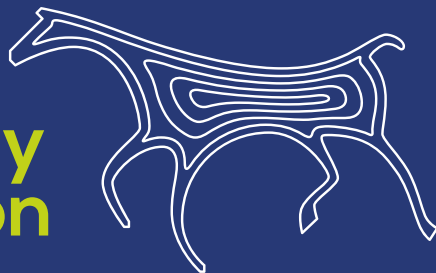


Annual Review 2019-20

Wiltshire
Community
Foundation

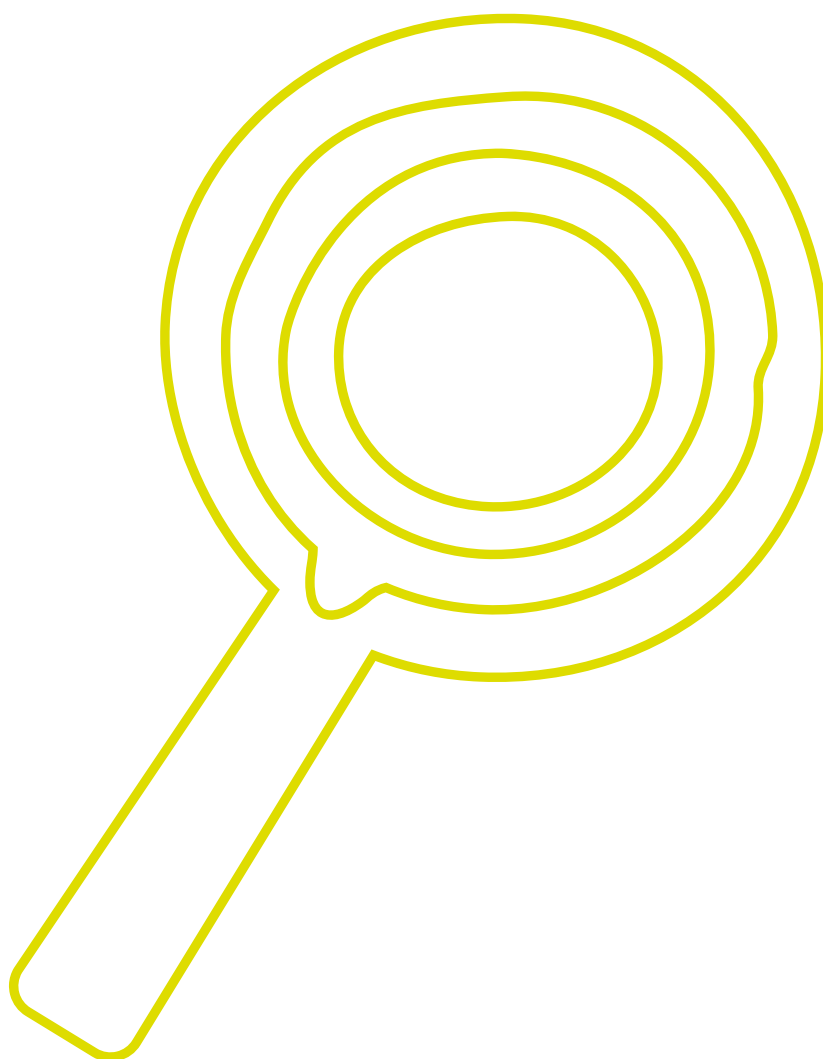


Connecting people who care
with causes that matter

Contents

4	Our figures
5	Our impact
6	From the Chairman
8	Our strategy
10	Poverty uncovered
12	Connecting Wiltshire
14	Investing in futures
16	Coronavirus response
20	Maximizing local giving
22	Grants to groups
24	Thank you to our donors
25	Our people

This Annual Review has been
generously sponsored by



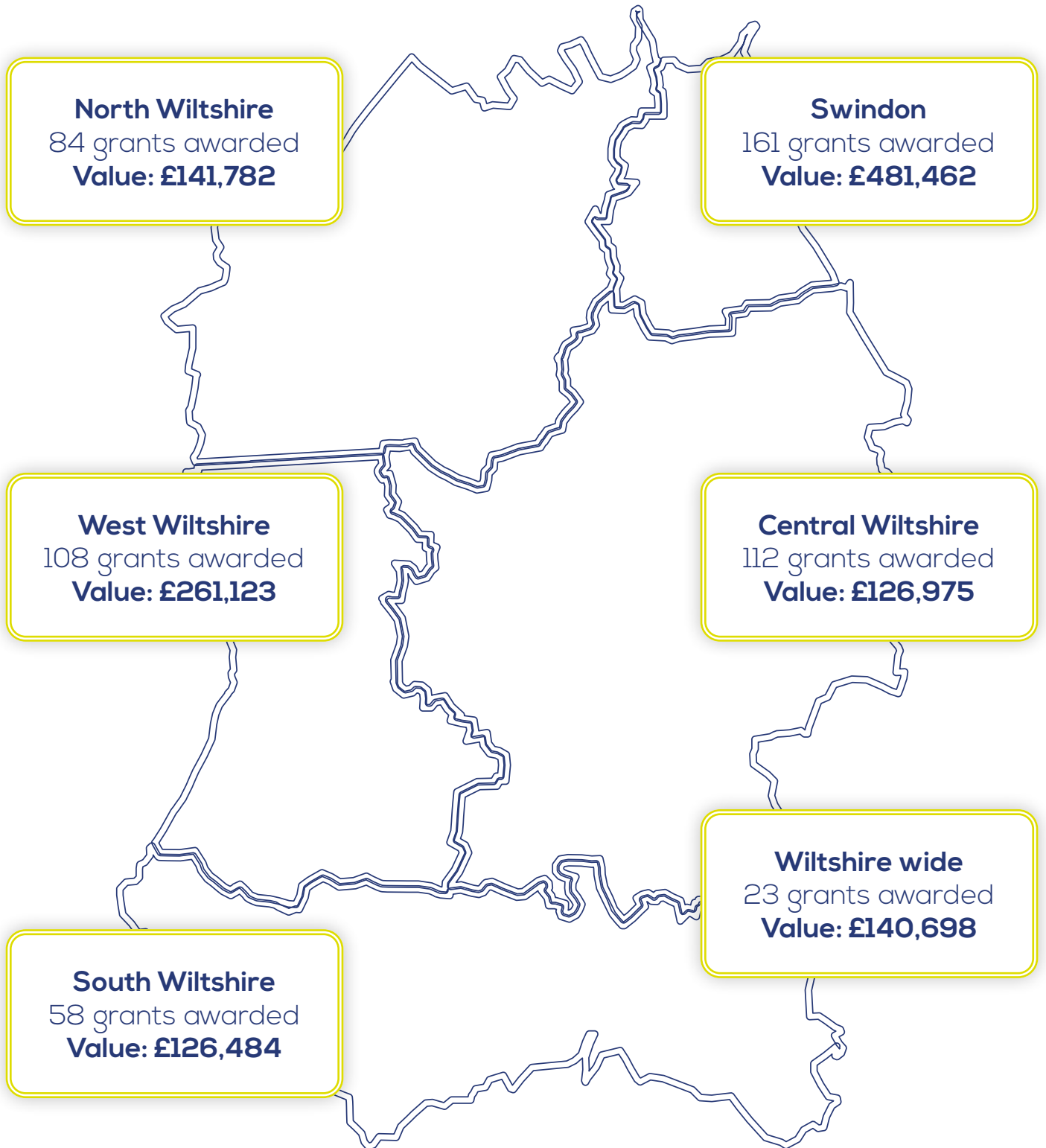
£1.28m



Last year **Wiltshire Community Foundation** awarded **almost £1.28 million** to support the people of Wiltshire and Swindon.

This report shows the impact we have made.

Our figures



In total

546 grants were awarded across our programmes supporting almost 45,000 people

Our **impact**



£426,367

awarded to **154 projects and individuals** to **improve life skills** and **employability**, **encourage enterprise** and **enable children and young people** to **access education**.



£457,836

awarded to **316 projects and individuals** to **support and improve people's physical and mental health**, **well-being** and **safety**.

£257,229

awarded to **44 projects** to **reduce isolation** and **disadvantage** and **promote access** to **local services**.



£58,108

awarded to **16 projects** to **strengthen communities** and **increase engagement** with **community initiatives**.



£78,984

awarded to **16 projects** to **connect people** with the **arts, culture, heritage** and the **environment**.



Over
1,500

hours of advice and training provided to the charity and voluntary sector **building capacity, skills, confidence** and **networks**.

From the Chairman

2019/20 was a year when we made great progress on planning for the future – plans that were then tested to the full by the onset of the coronavirus crisis. At a time when a great number of charities are forecast to experience serious financial difficulties as a result of lockdown and an expected recession, I am pleased to report that Wiltshire Community Foundation is not only surviving but providing more funding and support than ever before. I put this down to five factors:

First – Our donors: Thanks to the foresight of our predecessors and donors over 45 years, we now have a healthy endowment fund of £25.5m (as at June 2020), which not only provides a sustainable funding stream for predicted needs but also a strategic resource for the unexpected – such as the present crisis. In addition, local donors have responded magnificently by contributing flow through funding of over £500k so far for our Wiltshire & Swindon Coronavirus Appeal – a figure which has effectively doubled with contributions from the National Emergency Trust and Department of Digital, Culture, Media and Sport who both saw us as the logical partner for distributing national funds in the county.

Second – Our communities and volunteers: The foundation discharges its financial and advisory support through the county's voluntary and community sector (VCS). The money raised by our Coronavirus Appeal was initially spent on emergency response funding and latterly in supporting the VCS despite the closure of their normal meeting venues and the cessation of local fundraising. Lockdown saw an exponential growth in the number of community support groups and volunteers involved – many of whom benefitted from foundation grants. All this amounted to a timely reminder of the power of community spirit and the role of volunteers in an emergency.

“...in keeping with our new strategic stance, we have committed to investing £10m in our communities over the period of the plan – an effective doubling of our grants”.

Third – Our forward planning: 2020 marked the last full year covered by our previous strategic plan. Much of our effort during 2019/20 was therefore spent developing an ambitious and forward-looking five-year strategic plan, which was duly launched in April 2020. In my last end-of-

year report I forecast that: “we are poised to move onto the front foot and take a more pro-active, strategic role than we have been able to hitherto” and to expect that: “the foundation would become more pro-active in the coming year – in terms of fundraising, public relations and increasingly ambitious community leadership projects”. Happily – but entirely coincidentally – all this has come to pass in time to rise to the challenges that coronavirus threw at us. Looking forward, we are in no doubt that coronavirus will have a continuing effect on the VCS over the full course of the plan. Thus, in keeping with our new strategic stance, we have committed to investing £10m in our communities over the period of the plan – an effective doubling of our grants (and therefore fundraising effort).

Fourth – Our operational effectiveness: A central theme of the new strategic plan, which embraces our own digital transformation, is to improve operational efficiency and thus effectiveness. This initiative includes the introduction of a new website; improvements to the way we select trustees for greater diversity; introducing new ways of working for the staff; and developing effective metrics for demonstrating value for money. This latter issue is vital if we are to attract scarce funding in a post-COVID-19 recession and be able to present a lean and efficient face to our increasingly cash-strapped communities. The results speak for themselves: in 2019/20 we awarded £1,279k in grants and secured £688k in flow through funding – our greatest annual outputs ever (and we have already exceeded these figures in the first 6 months of 2020/21). New metrics mean that we can measure our internal efficiency more accurately and transparently. Thus, we can now demonstrate that in 2019/20 in terms of input – for every £1 we spent on fundraising activities we raised £9.66. And in terms of output – for every £1 spent on grant-making we were able to award £9.43 of grants and support. Significantly, the latter does not include the monetary value of the community services we deliver (e.g. our professional advice, workshops, and research documents). Taking this into account, we estimate our running costs represent no more than 17% of the full value of benefits delivered. This is a pessimistic estimate as it includes the unavoidable costs of meeting the exacting governance standards that the Charity Commission expect, and the equally high standard of fund management that our donors deserve. On the other hand, it currently does not include the unquantified value of the comprehensive service we provide for donors vis: the matching of donors with appropriate recipients; the ability to match-fund and therefore potentially double the value of



“in 2019/20for every £1 we spent on fundraising activities we raised £9.66. Andfor every £1 spent on grant-making we were able to award £9.43 in grants and support.”

donations; and the fact that endowment fund-growth not only produces the in-year benefits quoted but also ensures accumulating year-on-year income going forward.

Finally, and most importantly – our team: I am blessed with talented and dedicated trustee colleagues – and we are supported by experienced and close-knit staff. We work hard at integrating as one trustee/staff team whilst respecting each other’s roles. In October 2019 we lost three of our longest-serving trustees – William Wyldbore-Smith (who had also been acting as Interim Chairman before my arrival in June 2019), Christopher Bromfield, and Alison Radevsky – who has since returned as a volunteer to help with coronavirus grants. We also said farewell to Dame Elizabeth Neville in September 2020 having served nine years as a trustee. We welcomed Junab Ali as a trustee in September 2020. On the staff side, after 12 years’ as

our CEO, Rosemary Macdonald has now moved onwards and upwards to become CEO of the UK Community Foundations, our national organisation. During her time with us, Rosemary developed an awesome network across Wiltshire and Swindon and was instrumental in building up our endowment fund, so she leaves a big hole in the team. One of her many attributes was her ability to develop her team – so we were lucky that her two senior directors, Fiona Oliver and Vicky Hickey, were well-placed to step up just as coronavirus struck. They have not only managed the move of the staff team from office to home working but also have ensured that we have raised and distributed coronavirus appeal funds with considerable speed and efficiency – assisted by both trustees and staff who rose to the challenge magnificently. The trustees are therefore delighted to confirm the appointment of Fiona Oliver and Vicky Hickey as Joint Chief Executives, confident in the knowledge that we are in good hands, are well resourced, and have a robust plan going forward.

Ashley Truluck CB, CBE
Chairman of Trustees

Our strategy

The next five years: working together to deliver lasting change

Our new five-year plan builds on what we have achieved as a community foundation over the last forty-five years.

Our new objectives will ensure the money we award in grants has the greatest possible impact on the lives of local people. We will continue to develop our understanding of local needs and invest £10 million to help people and communities thrive across Wiltshire and Swindon.

It is essential that we respond appropriately to existing and emerging needs in our county. We want to be as informed as possible about the issues facing people in local communities and further understand how we can adapt and add value as we support the voluntary and community sector.

We will strive to ensure our grant-making is flexible and responsive to the different needs of local people

and the voluntary sector. We have a range of programmes which provide community groups and individuals with funding. Our independent panels decide on the amount of funding to award and can make multi-year awards for long-term projects. We know that grants for core costs, such as salaries, rent and utilities, are vital to the continued existence of community groups.



Vision:

To see more people thriving across Wiltshire and Swindon.

Mission:

To maximise the impact of charitable activity in our local communities by connecting people, information, and resources.

Values:

We are Brave – we are not afraid to uncover and address the issues affecting our communities.

We are Resourceful – we are innovative in our working practices maximising the impact of our funds.

We are Informed – we gather information from across the county and put it at the heart of everything we do.

We are Collaborative – we recognise that community projects are all about working with others for the common good.

We are Kind – we are caring and respectful when working with our communities, partners and each other.

We are Strategic – we are one team, united by one vision of more thriving communities across Wiltshire and Swindon.

Building on our achievements
so far 1975 to 2020*:

£16.4m awarded
in grants

£1.28m grants awarded
in 2019/20

£23.5m of funds under
management

Endowment
value of **£22.6m**

*(as at 31.03.2020)

Our new objectives:

We will continue to build a culture of philanthropy securing further funding for our local voluntary sector.

We will significantly increase our grant-making investing at least £10 million over five years into our local communities to help them thrive.

We will continuously review and develop our operational processes and procedures to ensure we maximise our efficiency and effectiveness and can demonstrate true value for money.

We will ensure our team has the culture, structure, skills and training in place to deliver our strategy.

We will share our research and analysis with funders and decision makers for the benefit of the voluntary sector and local communities.



Poverty uncovered

Wiltshire is perceived as an affluent county and for many it is. At first glance national statistics indicate that Wiltshire and Swindon are amongst the least deprived areas of England. However, it is only when looking at smaller neighbourhoods that levels of deprivation and extremes between areas become apparent.

48 neighbourhood areas in Wiltshire and Swindon are amongst the 30% most deprived in the country with a shocking 40% of children living in poverty in some wards. In many cases our most deprived areas are located next to the least deprived, a simple geographic reality that re-enforces and emphasises the inequalities between and within communities. Additionally, as a largely rural county, pockets of rural deprivation are often 'hidden' as they co-exist amongst rural affluence.

In 2019/20 we awarded 155 grants totalling over £893,000 to voluntary and community groups who tackle disadvantage, address poverty and improve well-being – helping over 43,000 local people.

Alongside this, we embarked on our Poverty Uncovered project to raise

awareness of the issue of poverty in our county, challenge misconceptions, start conversations and inspire action. Supported by a grant from the Global Challenges Local Solutions Program (GCLS), we carried out dedicated research and outreach and provided support to charitable and voluntary groups who respond to local need and disadvantage.

Between April and November 2019, over 60 people participated in our Funder+ training workshops and we supported 32 organisations during one-to-one advice sessions. We prioritised targeted engagement and support work in Trowbridge, where our early analysis had identified lower levels of funding applications than expected. The Poverty Uncovered project also provided the chance to expand our learning and explore how the UN Sustainable Development Goals are relevant locally.

Sharing our research at three key events - our Poverty Roundtable, the Wiltshire Money Partnership, and the Swindon Money Matters Network – sparked valuable debate and illustrated how, for many people across Wiltshire and Swindon, poverty limits and constrains their opportunities and life choices. Our conversations explored these challenges and highlighted the desire among the voluntary and community and public sectors to gain more information as well as an appetite to develop and improve joint working and collaboration.

The results of our research and engagement work have strengthened our determination to champion and support the vital work undertaken by our local voluntary and community sector to respond to poverty locally. By recognising their knowledge, skills and

experience and funding their activities to improve education and skills, promote health and well-being and strengthen families we will continue to enable people across Wiltshire and Swindon to thrive.

This support is now more important than ever. Our Poverty Uncovered project identified food poverty, fuel poverty and in-work poverty as growing issues across Wiltshire and

Swindon and these will be greatly exacerbated by the coronavirus pandemic. We will continue to use our learning to adapt and respond to need as illustrated by the development of our Foundation Coronavirus Response & Recovery grants. This approach will continue to underpin our work in 2020/21 and we have pledged to increase funding awarded to communities through our programmes.

Our Poverty Uncovered work was part-funded by the C.S. Mott Foundation under the Global Challenges Local Solutions Program run by the Academy for the Development of Philanthropy in Poland.



Surviving Winter

Alongside the grants we gave to groups to tackle the issues associated with poverty, we have also provided immediate relief to elderly and vulnerable people across Wiltshire and Swindon living in fuel poverty through our Surviving Winter programme.

Shockingly, the UK has one of the highest levels of winter-related deaths amongst the elderly in Europe. NHS statistics show that up to 400 people in Wiltshire and Swindon die each year simply because they cannot afford to heat their homes. The majority of people who suffer premature winter-related deaths are over 65, and 75 per cent of these deaths are due to the impact the cold has on respiratory and circulatory conditions. According to research by the

Department for Business, Energy & Industrial Strategy almost 30,000 households in Wiltshire and Swindon are living in fuel poverty and cannot afford to heat their home properly - that is almost one in ten homes.

In 2019/20 our Surviving Winter programme awarded 266 grants of £300 to help 382 local people who faced the harsh reality of choosing between eating or heating. We worked in partnership with Age UK Wiltshire and Warm and Safe Wiltshire to ensure that the support targeted those most in need. These organisations also provide energy-saving advice to help make bills more affordable in the long-term as well as signposting individuals to other support they may be eligible for.

This year was our **most successful Surviving Winter campaign** to date. Thanks to the **generosity** of individual donors, many of whom gave their Winter Fuel Allowance, as well as trusts and businesses, **we raised over £93,000**. **Over the last decade** we have awarded **£598,552** in grants to **1,829 households** in Wiltshire and Swindon.





ROBERT AUCKLAND

Connecting Wiltshire

In 2018 we embarked on a project focused on tackling loneliness and isolation in Wiltshire and Swindon where it is estimated that more than 100,000 people are lonely often or all of the time.

Funded in part by the National Lottery Community Fund and the Department of Digital, Culture, Media and Sport we worked with local voluntary, community and statutory organisations to map the support currently available for those who are lonely or isolated; assess which services and initiatives are working, and identify the challenges, needs and gaps in current provisions.

We continued to build on this important work in 2019/20. Our Loneliness Uncovered deep dive reviewed existing research and hosted a series of networking workshops to gather evidence and learn from local insight and experience. In September 2019, over 120 people came together to share, learn, and collaborate at our Building Connections themed Annual Conference. We also initiated the Swindon Connecting People Network, bringing together organisations from across Swindon, to create a new networking and learning space for those interested in and providing activities that connect people and address loneliness. Alongside this our Connecting Wiltshire Grants Programme ran in early 2020.

Addressing loneliness is not simply a case of providing more funding to increase provision. Often there are significant barriers that prevent people from accessing existing services or they might be unable, or unwilling, to admit they are lonely or may lack the confidence to ask for help.

Being lonely not only has a negative impact on our physical and mental health, it is in itself a 'blocker' that prevents people from seeking help and reconnecting with community activity. So, to have the greatest impact and improve well-being, services need to offer 'person-centred' approaches based on individual needs, wishes and aspirations, so that new connections are meaningful.

Our ambition with Connecting Wiltshire is to fund local groups to test new or imaginative outreach projects to find and support the hard to reach 'hidden lonely'. Through the programme we are delighted to have distributed over £58,500 to support groups including Shine Pinehurst, Swindon Carers Centre's Bereavement Therapy Group,

Wiltshire Music Centre's Celebrating Age Wiltshire and Wiltshire's Local Area Co-ordinators. Each of these organisations is helping to increase people's confidence to engage in and connect with appropriate community activities

Building Communities

Connecting Wiltshire is also supporting Wiltshire Centre for Independent Living's Make Someone Welcome. Building on this highly successful project, we have provided the organisation with a grant of £12,136 to support the employment of a 'community builder' to work intensively with grassroots groups to develop their ability to attract and appropriately support people who find accessing their community difficult. This approach will bridge the divide between the many community groups who show a willingness and enthusiasm to be welcoming and inclusive but don't have the means to attract people who might currently be isolated.

Support will include enabling people to explore ideas as to what meaningful inclusion is and how they can make community members feel valued. The ultimate aim is to make Wiltshire inclusive for all ensuring all residents feel valued and have a meaningful place as members of their communities.



The Connecting Wiltshire Grants programmes has been funded by ourselves, The Building Connections Fund (TNLCF and DCMS) The Pargiter Trust and Greater Western Railways.



Coronavirus has changed daily life for everyone, shielding and social distancing mean we've all changed the ways we interact with our families, friends, colleagues and our wider communities. However, there is increasing evidence that the effects of the pandemic have not been experienced equally. Although recent surveys show the proportion of people who say they are 'often' or 'always' lonely remains at about 5%, similar to levels before the coronavirus lockdown, lonely people are likely to have been affected differently. They are more likely, than others, to be struggling to find things to help them cope and are less likely to feel they have support they can fall back on. About a third of adults have said being lonely has affected their well-being, with young people, those living alone, those with health conditions, and the disabled being more likely to have felt 'lockdown loneliness'.

Lockdown means we all have a greater understanding of how being isolated feels and perhaps a new-found empathy with those who are most lonely. So, as we re-adjust, to a new post-lockdown Wiltshire, the ways we re-connect will be more important than ever and may require different solutions. Our Coronavirus Response & Recovery Grants will continue to support the voluntary sector across Wiltshire and Swindon to test ideas and to reach those who need it most, to engage and create lasting connections.

Investing in futures

We know that life for many young people is really tough as they struggle to find their way in a society with increasing incidents of youth and knife crime, and gang activity, the closure of key youth services, increasing health inequalities and now the catastrophic effect of coronavirus on education and employability.



Over half (53%) of the grants we awarded in 2019/20 were targeted at helping children and young people. Through our Foundation Grants programme, we funded community groups providing vital services such as counselling, mentoring, outdoor activities, skills development and confidence building.

Over the last four years, we funded a programme called PATHS in Swindon. The aim was to tackle the growing issue of poor mental health in children, to improve academic achievement and to make children less likely to experience behavioural and emotional problems. Our strategic grant funded Barnardos to train and coach staff and to provide training materials in Swindon Academy's primary schools, which serve some of Swindon's most disadvantaged communities. **Over 3,200 children and 80 staff have benefited from the PATHS programme with remarkable progress in concentration and attention, improved social and emotional competence, self-management, decision-making skills, positive behaviour, and engagement.**

The number of grants awarded to support children and young people with their education has almost doubled in the last two years from 70 grants in 2017/18 to 125 grants in 2019/20 with almost £305,000 awarded. The percentage of successful applications increased from 78% to 93%.

The majority of our education funding was awarded as bursaries of £1,500 per year to students from low-income families undertaking undergraduate degree courses. Our bursaries support many young people from very challenging backgrounds, helping to alleviate their financial concerns and allowing them to focus on their studies. Research released in 2019 highlighted that only 12% of young people in Wiltshire entitled to free school meals attend university compared to 42% of those who aren't eligible to receive them. In 2019/20 we awarded University Bursaries to 55 students, totalling £257,250.

Through our smaller Vocational Grants programme, the foundation supported 43 young people from low-income families to pursue vocational studies with total grants



awarded of nearly £30,000 and our Education Support programme helped meet education-related costs of 27 children and young people with additional educational needs, awarding nearly £18,000 during the year.



Case Study

Denis Twomey, who grew up in Salisbury, was able to fulfil his ambition of becoming a stage manager thanks in part to the bursary he received. He won a place at the Bristol Old Vic Theatre School to study professional stage management but knew that without additional financial support he would not be able to take it up.

The former member of Stage 65 Youth Theatre at Salisbury Playhouse said: "This kind of world-class training meant that I was required to have all of the relevant tools and materials (on top of traditional student living costs) and because of the intensity of the course I would be unable to work to supplement my income; whilst my family were wholly supportive, they were not in a position to finance me, and Bristol isn't the cheapest place to live.

"Growing up in a one-parent family naturally meant that resources were limited, and my father couldn't bankroll me through my student years. The grant from Wiltshire Community Foundation enabled me to focus on my studies, hone my skills and become as well-rounded as I could be.

After graduating he secured a place on a touring production of Mamma Mia! Denis said: "Put simply, the support Wiltshire Community Foundation gave me changed my life. I don't quite know what I would have done had I not been able to follow my dream."

We are delighted that in 2019, Denis agreed to become a volunteer panel member of our University Bursaries programme helping to award grants to other young people.





Coronavirus response

On March 23 Prime Minister Boris Johnson announced widespread lockdown measures in a televised address to the nation. Like many organisations, we had anticipated this and had systems in place for our teams to work remotely.

Three days before, we had launched the Wiltshire & Swindon Coronavirus Response Appeal in recognition of the vital role the voluntary sector would play in tackling the fallout from the pandemic. Back then we had no idea how huge that contribution would be, nor the profound effect on the community groups' finances the pandemic would have just at the time they were most needed.

Our initial target was to raise £50,000 but we were taken aback by how the people of Wiltshire and Swindon responded. Within seven days we had raised more than £100,000 and in the weeks that followed, thanks to contributions from the public, charitable trusts, businesses and the National Emergencies Trust, that total continued to grow.

The influx of donations armed us with the means to help frontline groups.

By streamlining our grant application process we had made the first awards within a week of the lockdown announcement, ensuring the people in the most need were helped as quickly as possible.

Typically, our Annual Review would not report beyond the end of the financial year, but we wanted to acknowledge this unprecedented event and also the unprecedented response of the





Case study: Devizes Covid19 Support

Devizes Covid19 Support was one of a number of new groups established locally across Wiltshire specifically to respond to the crisis. For 19 weeks the group, which operated out of Devizes Town Hall, provided a range of support for those in need in the community, many of whom had no one else to turn to. A grant of £3,000 from our Coronavirus Response & Recovery Fund helped with the costs of staff, IT support for their call centre as well as food and other emergency supplies for vulnerable and low-income households.

Committee member Reverend Keith Brindle from St James Church said: "Looking back now it is hard to believe just what we have achieved and how quickly our community galvanised to meet the challenges posed by the pandemic. Between them, almost 400 volunteers responded to 5,700 calls, undertook over 2,000 shopping trips and delivered over 3,000 prescriptions to people across our town. Additionally, we made in-excess of 1,500 well-being calls to those who were isolated, lonely or vulnerable and arranged the preparation and delivery of over 800 free meals.

voluntary and community sector across Wiltshire and Swindon which was matched by the kind generosity of our donors.

We were humbled that by the end of July, with continuing support from donors, we had raised more than £1.1 million.

Of that total, more than £900,000 has been awarded to 175 community groups with many more applications under assessment. We have funded 24 groups providing support for the elderly, nine food banks, 32 groups working with children and young people, 27 Covid-19 Response initiatives, 12 mental health groups, six homeless organisations, 22 groups working with people with disabilities, five domestic abuse groups, 13 groups supporting people's health and well-being, 18 groups tackling poverty, and seven groups supporting Black, Asian and Minority Ethnic communities.

More than 130,000 people whose lives have been affected by the pandemic had been fed, counselled, encouraged, informed, befriended and advised thanks to our donors. >



"I would like to pay tribute to the energy and enthusiasm of our army of dedicated volunteers who graciously gave up their time, many on a weekly basis, to help others. It has been a privilege to work alongside them and a pretty impressive effort from Devizes to support their community in this way."





“Our Coronavirus Response & Recovery Fund grant is going to make a huge difference as it will allow us to provide early intervention and hopefully enable people to stay in their home and not get into debt.”

Case study: Wiltshire Citizens Advice

Wiltshire Citizens Advice which has offices in Devizes, Chippenham, Trowbridge and Salisbury was awarded £21,900 to help fund additional staff to increase their capacity to support a new wave of people facing employment and financial struggles because of the pandemic.

Chief Executive Suzanne Wigmore said: “Each year we provide advice to 18,000 people but since March this has totally changed - we have already seen a 600 per cent increase in the number of people we’ve advised about redundancy. Almost overnight around 100,000 people in the county have found their employment or financial situation impacted by coronavirus. There were 65,000 people being supported by the government furlough scheme, over 18,000 through the self-employment grants and there have been 12,000 new claims for Universal Credit. As these initiatives come to an end we know that a significant number will be facing redundancy or reduced hours and therefore a reduced salary and will be approaching us for support.

“We are going to be seeing a new client group and a lot of them are in the ‘we never thought it would happen to us’ group. It will include people who have been working in hospitality, in shops or on zero-hours contracts, and also those who have been on a high income but also have high outgoings to match it. People who have become used to a regular income will find the shock of losing it difficult to cope with particularly if they have fixed costs such as

mortgages, car loans, and school and university fees. When you are looking at managing debt and trying to work out what can be reduced it can be overwhelming. This group also don’t have any experience of Universal Credit or services such as the Jobcentre.

“Being able to provide advice as early as possible is essential as it prevents things from spiralling out of control. You only need to miss one or two mortgage payments or borrow one payday loan, which then gets rolled over, and things get out of hand. Our Coronavirus Response & Recovery Fund grant is going to make a huge difference as it will allow us to provide early intervention and hopefully enable people to stay in their home and not get into debt.”



< The speed, resilience and ingenuity charities and groups showed in the face of significant challenges and immense pressures has been truly remarkable. Long-established organisations had to adapt their services almost overnight to continue meeting the needs of those who depend on them by switching to online or phone contact.

Meanwhile all across the county, people on furlough or without work, who had never dreamed of volunteering, saw the needs of their communities and stepped up to form groups that shopped, distributed food, made PPE, collected prescriptions and even tended graves for those forced to shield at home. In just a matter of weeks these groups set up complex logistics and distribution networks and marshalled hundreds of volunteers.

We want to recognise the efforts of every charity and community group, their staff, trustees and volunteers who worked tirelessly to support those in need across Wiltshire and Swindon. We are also hugely thankful to the generous donors who helped us fund them.



Coronavirus – What next?

Across Wiltshire and Swindon, the impact of the pandemic and the lockdown are having far-reaching and long-term consequences. Many of the challenges people faced pre-Covid 19 – domestic violence, mental health issues, homelessness, unemployment, poverty and loneliness - have been magnified and, as the case study from Wiltshire Citizens Advice illustrates, we expect more and more households to be facing significant financial hardship into 2021. It is clear that many of our communities will continue to need support for some time to come.

While our charity and voluntary groups have gone above and beyond throughout the crisis, it also had a huge financial impact on them. Most have experienced significant financial loss as their income-generating activities and fundraising were curtailed due to lockdown and many still have fixed costs they need to meet. Additionally, adapting to new ways of working due to lockdown resulted in unexpected costs such as investment in IT to enable organisations to work remotely, as well as purchasing equipment to ensure their service complied with Covid-19 safe guidelines. A recent survey conducted by Wessex Community Action reported 22% of local community groups were at risk of closure. All this, coupled with a looming recession and the anticipated cuts to services due to council deficits, paints a very challenging future for our voluntary and charity sector.

However, from our conversations across the sector, we resoundingly heard a determination from organisations not only to continue to offer their services but to use the lessons they have learnt from the pandemic to come back bigger and better. To do this they need our support now more than ever.

We have therefore increased our target for the Wiltshire & Swindon Coronavirus Response Appeal to £1.5 million. Alongside this, our Board has committed to doubling our grant making to groups to £2.1 million in 2020/21 in recognition of the incredible community response that is evident across Wiltshire and Swindon and the overwhelming needs of local people. If you would like to discuss how you can support us in achieving this please contact Fiona Oliver on 01380 738989 or email Fiona.oliver@wiltshirecf.org.uk.



Maximising local g

For every £1 spent on fundraising we generated donations of £9.66 in 2019/20.

We connect people who care with causes that matter. With over 45 years of experience of supporting Wiltshire and Swindon communities, we provide donors, giving at all levels, with simple solutions to maximise their charitable giving.

We offer several ways to give, with flow through funds providing immediate relief and endowment funds nurtured for the long-term benefit of local communities. We always welcome the opportunity to work with donors to find the best solution for their local giving whilst ensuring that every donation makes a difference.

Friends of Wiltshire & Swindon Community Fund
We welcome Friends of the Foundation

with a one off or regular donation to the Wiltshire & Swindon Community Fund. This unrestricted endowed fund can be used to support local voluntary and community organisations and can be used by the trustees to support the development and growth of the foundation.

Set up a named fund
Setting up a named fund in the name of your family or business is easy, straightforward, cost-effective and tax efficient. We can work with you to find out more about your ambitions for your giving and the difference you would like to make. You can start with a single donation and add to it over time as you feel able.

Leave a legacy
We know how important and daunting it can be to set up a legacy. We

consider it a great privilege to work closely with people who want to ensure their charitable giving goes on beyond their lifetime. You can trust us to ensure that your charitable giving wishes will be fulfilled.

Transfer a trust
You can transfer an existing charitable trust to Wiltshire Community Foundation. We will ensure that grants are distributed in the spirit of the trust's original objectives, both now and in the future.

Gift shares, land, or buildings
We are well placed to receive donations of shares, land, or buildings. Speak to your professional advisor or call Joanne Brady for information about how we can help on 01380 738989.



iving

For every £1 spent on grant-making we awarded £9.43 in grants and support.

The foundation provides the following services to philanthropists who have established funds:

- a bespoke service according to the desired level of involvement from the individual fund holder
- advice on how best to incorporate local giving into a philanthropic strategy
- a unique and in-depth knowledge of the charitable sector and unmet needs in Wiltshire
- a range of funds including endowment and immediate grant-making funds and, more recently, collective funds for those who do not wish to set up their own fund
- a comprehensive due diligence process which includes grant assessment and grant monitoring
- investment expertise
- site visits to community groups.

In 2019/20 we finalised the transfer of four trusts. The Pickwick Educational Foundation Fund, Madam Alexander's Gift Fund and Madam Alexander's Wheelchair Charity will continue to provide support for disadvantaged people in Corsham.

The transfer of the Dr C S Kingston Fund, a restricted endowment fund providing support for disadvantaged people in Trowbridge, was approved by the Charity Commission in January 2019 and completed in August 2019.

For more information on how you can work with us to enable more people across Wiltshire and Swindon to thrive please contact **Joanne Brady** or **Fiona Oliver** on **01380 738989**.

Grants to groups

One of the objectives of our new five-year strategic plan is to increase our impact evaluation and analysis to inform our response to local communities. By having a thorough understanding of our impact we will be able to continually review our grants programmes and processes to maximise our effectiveness.

As part of this objective we have started to map the grants we give to voluntary and charitable groups

against the Sustainable Development Goals (SDGs). The SDGs are the blueprint to achieve a better and more sustainable future for all by 2030. They have been committed to by all member states of the UN and address the global challenges we face. They have ambitious aims including ending poverty and hunger, improving good health and well-being, improving standards of education for all children and taking action to build sustainable communities. They might be global,

but the goals apply to us all, young and old, across the UK and in every local community. We can all play some part in achieving them, as individuals, in our communities and in partnership with others, by becoming more aware of the issues and acting for change.

In 2019/20 the grants we gave to groups contributed towards 13 of the 17 SDGs and had the most significant impact on these six:



Grant Application Name	Amount Awarded £
2385 Melksham Sqn Air Cadets	2,000
Advocacy in action	4,830
AFC Melksham	4,000
Age UK Wiltshire	2,750
All Cannings Community Shop Society	5,000
Alzheimers Support	1,500
Arts Together	15,000
Back on Track – Stroke Rehab Service	15,000
Bourne Valley Day Centre	4,000
Bradford on Avon Bowls Club	270
Cedar Court Day Centre	5,000
Colerne Old School Charity	6,496
Collingbourne Kingston PCC	3,000
Community First	4,896
Community Transport South Wiltshire	10,000
DASH	11,300
Devizes & District Association for the Disabled	560
Devizes Opendoors	16,500
Devizes Play Parties	1,500
Doorway	15,000
Doorway Wiltshire Ltd.	3,000
East Knoyle Village Hall Committee	750

Grant Application Name	Amount Awarded £
FC Abbey Meads	1,500
Friends of Riverside	3,980
Friends of the Railway Path	1,950
Great Bedwyn Youth Group	2,800
Harnham Day Centre	2,000
Haydon Wick Over 60s Club	1,000
Help Counselling Services	15,000
Hjälpande Händer Catering	1,000
Home-Start Kennet	1,542.78
In This Together Swindon	5,000
Inner Flame	7,800
IPSUM	15,000
Ivy Wildlife Garden	2,348.44
KFR	7,500
La Folia Music	2,500
Larkrise Community Farm	5,000
Little Angels Toddler Group	3,500
Melksham Council for Community Service	10,000
Melksham Town Short Mat Bowls Club	2,000
Monday-Wednesday Club Trowbridge	1,020
North Bradley Computer Club	2,250
ONE STEP AHEAD PROJECT (OSAP)	2,000
Out of the Can	10,000

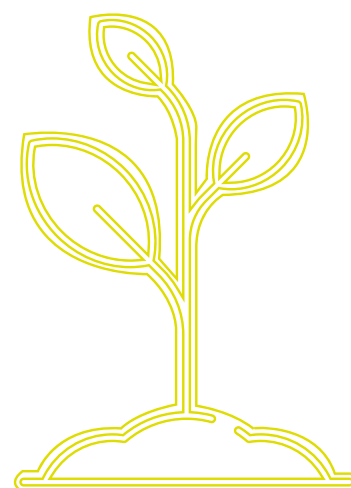
Grant Application Name	Amount Awarded £
Parkinson's UK – Swindon & District Branch	5,000
Parks Volunteer Resource & Retail Outlet	8,000
Patches	1,000
Pathfinders (Swindon)	4,000
Pause – Wiltshire Practice	5,000
Penhill Orchard	2,000
Pinehurst Initiative Forum	4,975
Plot 35	2,000
Pound Arts Trust Ltd	2,090
Prime Theatre Company	21,370.61
REACH Inclusive Arts	5,000
Renew Men's shed	10,000
River Bourne Community Farm CIC	3,500
Roche Court Educational Trust	10,500
Royal Wootton Bassett Sea Cadets	3,000
Salisbury Museum	1,700
Samaritans of Salisbury & District	10,000
Seeds4Success	6,658
Shine Pinehurst	19,950
SMASH Youth Project	5,000
St James' Church	5,000
St Johns Honey Pot Day Care Centre	1,500



Grant Application Name	Amount Awarded £
Summer Fun In Calne Playscheme	2,000
Swindon & Wiltshire Pride	2,000
Swindon 10 – 18 Project (STEP)	9,529.97
Swindon 105.5	22,000
Swindon Borough Council – RESPECT	71,000
Swindon Carers Centre	7,686
Swindon Dial A Ride	10,000
Swindon Downs Syndrome Group	5,000
Swindon Family Contact Centre	10,000
Swindon Night Shelter	10,000
Swindon Shock Basketball	5,589
Swindon Therapy Centre for Multiple Sclerosis	24,064
Swindon Women's Aid	11,128.86
Thamesdown Hydrotherapy Pool Association	1,800
The Bridge Youth Project Trust	14,180
The Discerning Dad Caring Community	2,000
The Filling Station	1,134.86
The Harbour Project	8,376
The New Mechanics Institution Preservation Trust Ltd	1,500
The New Road Centre	5,000
The Open Door Centre	8,000

Grant Application Name	Amount Awarded £
The Platform Project	8,000
The Wiltshire Outdoor Learning Team	5,000
Tick Tock Playgroup	20,000
Tidworth and Ludgershall Mens Shed	1,850
Trowbridge Community Area Future	22,634
Voluntary Action Swindon	5,000
Waste Not Want Not	1,500
Wessex Community Action	10,000
West Lavington Village Hall	1,875
West Lavington Youth Club	9,000
West Wilts Multi Faith Forum	5,000
Westbury Shed	12,870
Willows Counselling Service	12,000
Wilton Men's Shed	1,480
Wiltshire and Swindon Credit Union	10,000
Wiltshire Centre for Independent Living	20,690
Wiltshire Council	14,040
Wiltshire Magistrates Association	500
Wiltshire Music Centre	23,851.67
Wiltshire Scrapstore and Resource Centre	5,000

Grant Application Name	Amount Awarded £
Wiltshire Search and Rescue (WILSAR)	3,820
Wiltshire Treehouse	10,000
Wiltshire Wildlife Trust	29,827
Wiltshire Youth for Christ	18,746.94
Wroughton Infant School	12,500
Young Melksham	4,500
Youth Action Wiltshire	5,848.26
Youth Adventure Trust	10,000
Grand Total	895,308.39



Thank you to our donors

Providing vital funding and support towards Wiltshire Community Foundation's operational costs

Bank of England
Brewster Maude Charitable Trust
Gaiger Brothers Limited
F Willow
Headshot Diva
Intel Corporation (UK) Ltd
Mark Allen Group
M Sansome
MHA Monahans
Mr and Mrs J Roberts
Ojo Solutions
Perrys Recycling
S Sharp
Smith and Williamson Chartered Accountants
The Fulmer Charitable Trust
The Inchcape Foundation
Wadworth and Co Ltd
UK Community Foundations

Delivering immediate benefit where Wiltshire and Swindon people need it most

#iwill
British & Foreign Schools Society
Cairns Charitable Trust
Community Energy Lower Bassett Down CIC
Coventry Building Society Grants Fund
Deepest Wiltshire
Empower Community Foundation
S Evans
Four Acre Trust
C Fraser
L Garton
Global Challenges Local Solutions Fund
Great Western Railways
High Sheriff of Wiltshire & Swindon, David Scott
Mr and Mrs D Holder
Kennet Community Energy
Kennet Friends
Old Mill
Office of the Police & Crime Commissioner
T Otley
J Reis
J Rendell
Rockfire Capital Limited
Royal London
SPW Careers
Surviving Winter Grants Fund
Tampon Tax Fund
TE Connectivity Ltd
The Andrew & Belinda Scott Charitable Trust
The Bryan Guinness Charitable Trust
The Frogal Trust

The Golden Bottle Charitable Trust
The Henry C Hoare Charitable Trust
The J & L Joll Charitable Trust
The Pargiter Trust
The Peter Courtauld Charitable Trust
The Tanner Trust
The Underwood Trust
Trowbridge PV Limited
Trowbridge Town Trust
Verdon-Smith Family Charitable Trust
Wadworth and Co Ltd
S Walden
Walter Guinness Charitable Trust
Wessex Water
Westmill Solar Coop
UK Community Foundations

Everlasting benefit, providing money and support for today and tomorrow. Endowed funds provide a sustainable source of grant-making year on year

A W Gale Charitable Trust Fund
Abbots Fund
Ainslie Foundation Fund
Alan Evans Memorial Trust Fund
Alastair and Lindsey Muir Fund
Ancram Foundation Fund
APT Electrics Fund
Arbib Foundation Fund
Arthur and Molly Maidment Foundation Trust Fund
Avon Rubber Fund
Barclays Bank Fund
B J Richards Trust Fund
Blagrove Trust Fund
Blagrove Trust Strategic Impact Fund
Bluemay Fund
Boris Karloff Fund
Broad Town Trust Fund
Calne Sports Centre Trust Fund
Castrol Fund
Catalent UK Fund
Clare Evans Foundation Fund
Clark Holt Fund
Cleland Family Fund
David Airey Foundation Fund
David Rogers Fund
Dolby Laboratories Fund
Dr C S Kingston Fund
Ebble Fund
Edwards Ford Fund
Enterprise Inns Fund
European Metal Recycling Fund
Fiege Merlin Distribution Fund
Fitzwilliam-Lay Foundation Fund
Friends of WSCF Endowment Fund
Fuelforce Ltd Fund
Gazette and Herald Fund

Giles Family Fund
Gold Fund
Gordon Lake Education Fund
Gordon Lake Fund for Groups
Greenacres Fund
GWR Swindon Match Fund
Handy Fund
Hannick Fund
Harrison Fund
Haydon Wick Fund
Heart Fund
Hescott Fund
Hexagon Intergraph Fund
Hexagon Intergraph Swindon Fund
High Sheriff's Fund
Hiscox Fund
Honda Motor Europe Logistics Fund
Honda of the UK Manufacturing Fund
Hopton Sports Fund
HSBC Fund
I and D Wilson Foundation Fund
Ian Mactaggart Fund
Intel Corporation Fund
James and Lucilla Joll Foundation Fund
James Smith Fund
Jane Mactaggart Fund
John and Susan Rendell Fund
John and Valerie Rendell Fund
John Cowe Memorial Fund
JP Morgan Fleming Fund
Ken and Jilly Carter Fund
Kestrels Fund
Kitty O'Connor Fund
Knorr-Bremse Rail Systems Fund
KPMG Fund
Little Somerford Trust Fund
Madam Alexander Gift Fund
Maples Fund
Marsden Foundation Fund
Matthews Family Foundation Fund
Michael & Annabel Gibb Foundation Fund
Michael Wilson Fund
Millennium Fund
Motorola Fund
Moyra James Foundation Fund
Mrs L E Sutton Fund
Nationwide Building Society Fund
Newbigging Fund
Nicholas and Diana Baring Foundation Fund
Nora Clayton Fund
North Wessex Downs Fund
Ottos Land Rover Fund
Paul Osborne Fund
Paws On Fund
Peanuts Trust Fund
Peter and Nicky Alberry Foundation Fund
Peter and Sarah Troughton Foundation Fund

Phipps Family Fund
Pickwick Educational Foundation Fund
Qinetiq Fund
R and VH Fund
Reekie Foundation Fund
Rosemary and Fraser
Macdonald Swindon Fund
Ross Nichols Fund
Rotary Club of Swindon North Fund
Royds Withy King Fund
RWE Npower Fund
Salisbury Diocesan Social Welfare Fund
Salisbury Jubilee Fund
Samuel William Farmer Trust Fund
Sangster Group Fund
Shuker Education Fund
Sir Charles & Lady Nunneley Fund
Small Council Trusts Fund
Stanley Security Solutions Fund
Steve Willcox Foundation Fund
Swindon Fund
TE Connectivity Fund
TE Connectivity Swindon Match Fund
Teal Barnett Fund
Tessa and John Manser Fund
The Best Foundation Fund
The Filling Station Fund
The Francis Wilson Trust Fund
The Macdonald Family Fund
The Taurus Fund
The Thomas Charitable Trust Fund
The Tony Long Trust Fund
Thomas Grace Fund
Tithegrove Ltd Fund
Tretlowans LLP Fund
Triumph International Fund
Uniq Fund
Villiers Fund
Wadworth Fund
Walter and Barbara Marais Foundation Fund
Wansbroughs Fund
WCF Central Wiltshire Fund
WCF Salisbury Fund
William and Madeline Wilks Fund
William Doc Couch Fund for Groups
William Doc Couch Fund for Individuals
Wilson's Solicitors Fund
Wiltshire and Swindon Fund
Wiltshire Education Fund
Wiltshire Music Centre Fund
Wiltshire Society Fund
Wiltshire Times Fund
Withy Trust Fund
Woodget Fund
Wyldbore-Smith Fund
Yorke Fund
Youth Action Wiltshire Growth Fund

Our people

Patrons

John Bush CVO OBE CStJ JP

Sarah Troughton CStJ, Lord Lieutenant of Wiltshire

The Rt Revd Nicholas Holtam, Bishop of Salisbury

The Rt Revd Dr Lee Rayfield, Bishop of Swindon

Trustees

Ashley Truluck CB CBE, Chair (from June 2019)

William Wyldbore-Smith, Vice Chair (to October 2019)

Junab Ali (from September 2020)

Christopher Bromfield (to October 2019)

Jason Dalley

Oliver Jones-Davies

Lisa Lewis

Angus Macpherson

Dame Elizabeth Neville DBE QPM DL (to September 2020)

Samantha O'Sullivan

James Phipps

Alison Radevsky (to October 2019)

Andy Tait

Ian Thomas

Steve Wall

Sue Webber

David Wray

Staff

Rosemary Macdonald BEM, Chief Executive (to August 2020)

Victoria Hickey, joint Chief Executive (from September 2020)

Fiona Oliver, joint Chief Executive (from September 2020)

Joanne Brady, Philanthropy Director

Jane Butler, Programmes Director (from September 2020)

Margaret Firth, Research and Engagement Manager (from October 2020)

Nicola Hillier, Grants Officer

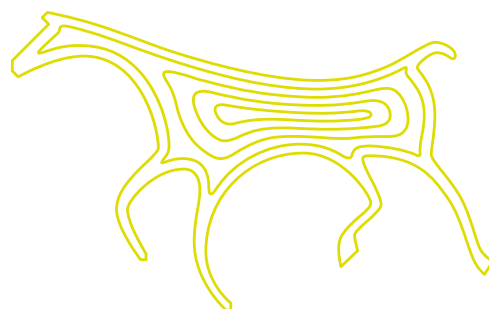
Karen Hobbs, Grants Officer

Karen Pugh, Grants Administrator

Phillipa Wall, Finance Assistant

Maggie Watson, Office Manager

Freelance support provided by Gary Lawrence,
Beth Maughan, Alex Page and Heidi Yorke



We are delighted to support the WCF Annual Report.

Uniquely placed in the industry, Smith & Williamson has been combining tax, accounting, financial planning and investment management services for over a century.

We are proud to be the Wiltshire Community Foundation Investment Manager and enjoy working with such an important and admired organisation to build the Endowment Fund in order to meet current needs, as well as those of future generations.

To find out more, please contact:

Ian Richley, Partner,

Smith & Williamson Investment Management LLP

0117 376 2223

ian.richley@smithandwilliamson.com

smithandwilliamson.com

Wiltshire Community Foundation
&

 Smith &
Williamson

Accountancy • Investment Management • Tax

The value of investments and the income from them can fall as well as rise and investors may not receive back the original amount invested.

© Smith & Williamson Holdings Limited 2020. Smith & Williamson LLP Regulated by the Institute of Chartered Accountants in England and Wales for a range of investment business activities. A member of Nexia International. Smith & Williamson Financial Services Limited authorised and regulated by the Financial Conduct Authority. Smith & Williamson Investment Management LLP authorised and regulated in the United Kingdom by the Financial Conduct Authority. The Financial Conduct Authority does not regulate all of the products and services referred to in this document, including Tax, Assurance and Business Services.

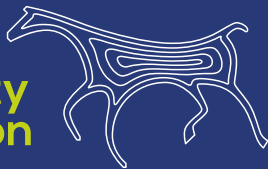
Accreditation



Registered Charity no. 1123126
Company Ltd by guarantee no. 6504318

Design
Mark Allen Group

**Wiltshire
Community
Foundation**



Sandcliff House
21 Northgate Street
Devizes
Wiltshire SN10 1JT

 01380 738989
 info@wiltshirecf.org.uk
 wiltshirecf.org.uk

Follow us on social media

 fb.com/cfwiltswindon
 @Wiltscf
 @wiltscf